



South Seven Center | Retail For Lease

1501-1715 MO-7 Highway, Blue Springs, Missouri



CONTACT AGENT FOR PRICING | 1,208 SF TO 5,332 SF SPACES

DEMOGRAPHICS

	1 mile	3 miles	5 miles
Estimated Population	12,407	49,813	94,745
Avg. Household Income	\$93,045	\$109,240	\$122,204

- 53,576 SF retail center on 4.5 Acres
- Newly renovated exterior
- Traffic counts of over 24,000 cars per day on MO-7 Highway
- Monument signage opportunity
- 5,332 SF Former Medical office
- 2,147 SF Former Dental office



CLICK HERE TO VIEW MORE LISTING INFORMATION

For More Information Contact:

KARSYN SMITH | 816.412.7372 | karsynsmith@blockandco.com

JOSH ROTHCHILD | 816.412.7348 | jrothschild@blockandco.com

Exclusive Agents



South Seven Center | Retail For Lease

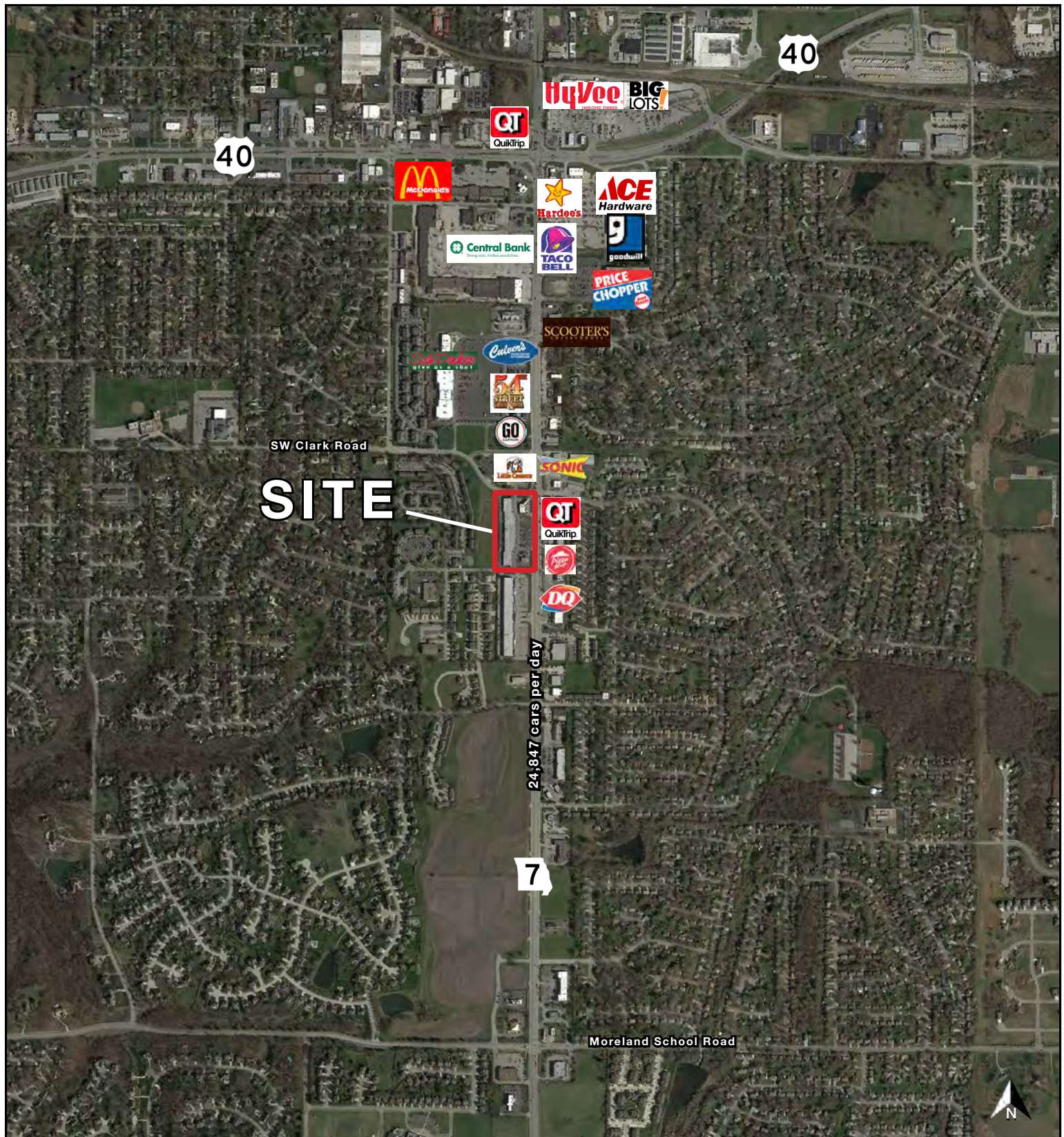
1501-1715 MO-7 Highway, Blue Springs, Missouri

SITE PLAN



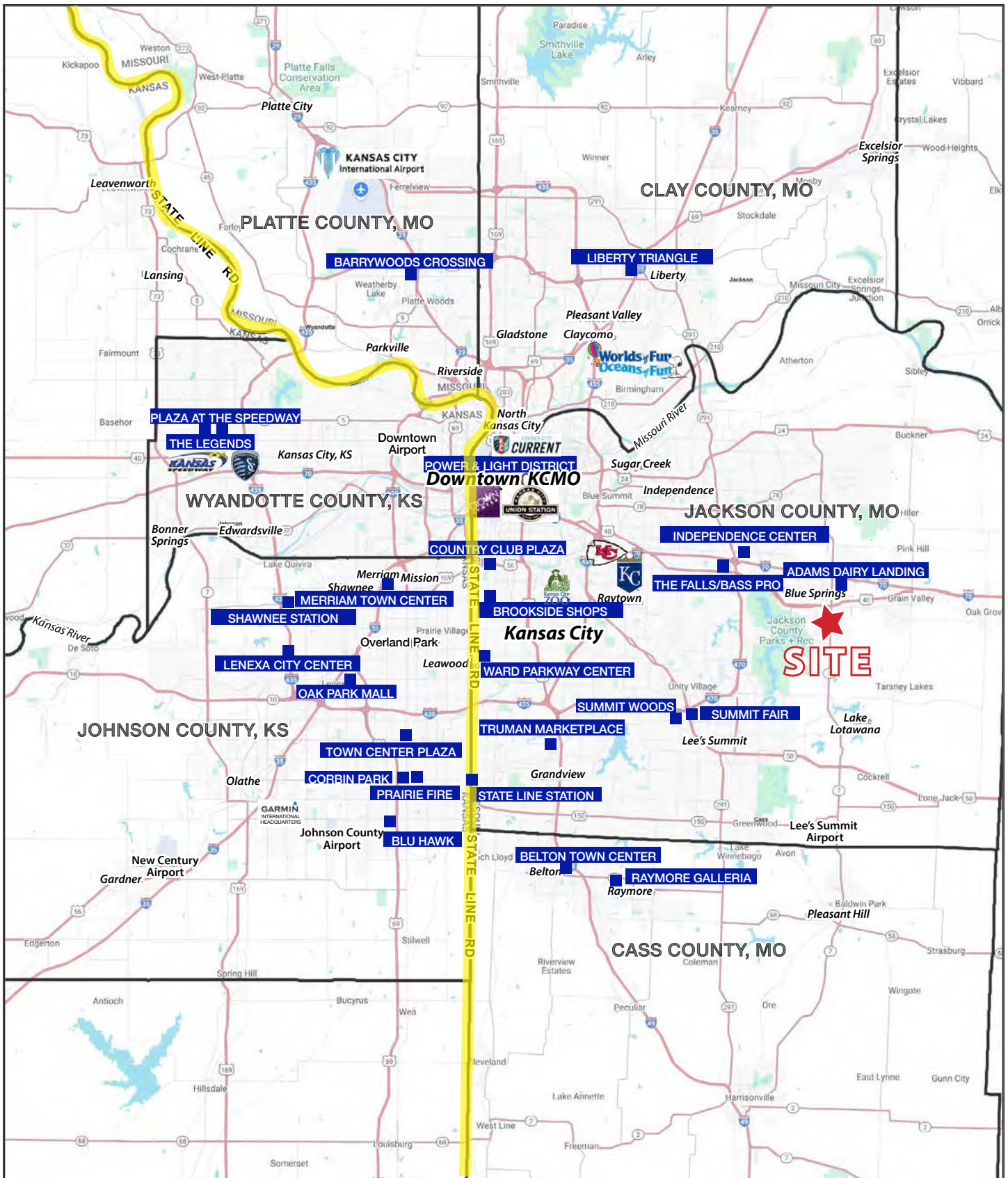
#	Name	SF
1501	Linq Food Mart	3,376 SF
1503	Rico's Cutz	1,701 SF
1505	Hollywood Nails	1,056 SF
1507	Aromatic Spa	1,070 SF
1511-13	AVAILABLE	5,148 SF
1515	AVAILABLE	1,208 SF
1517	AVAILABLE	1,378 SF
1519	AVAILABLE	1,582 SF
1523	Company Champions	3,136 SF
1525	AVAILABLE	2,147 SF
1527	Vape Escape	1,355 SF
1605	AVAILABLE	3,931 SF
1607	Karate Studio	1,377 SF
1611	Retail Bins	4,005 SF
1613	AVAILABLE	5,332 SF
1621	the Bar	2,632 SF
1623	AVAILABLE	1,550 SF
1701	JGL Commodities	1,556 SF
1705	Cuddle Cats Cafe	2,778 SF
1707	Misty's Alterations	988 SF
1711	The Pizza Place	3,206 SF
1713	Yum Yum's Donuts	3,206 SF
1715	Animed Animal Hospital	2,160 SF

AERIAL



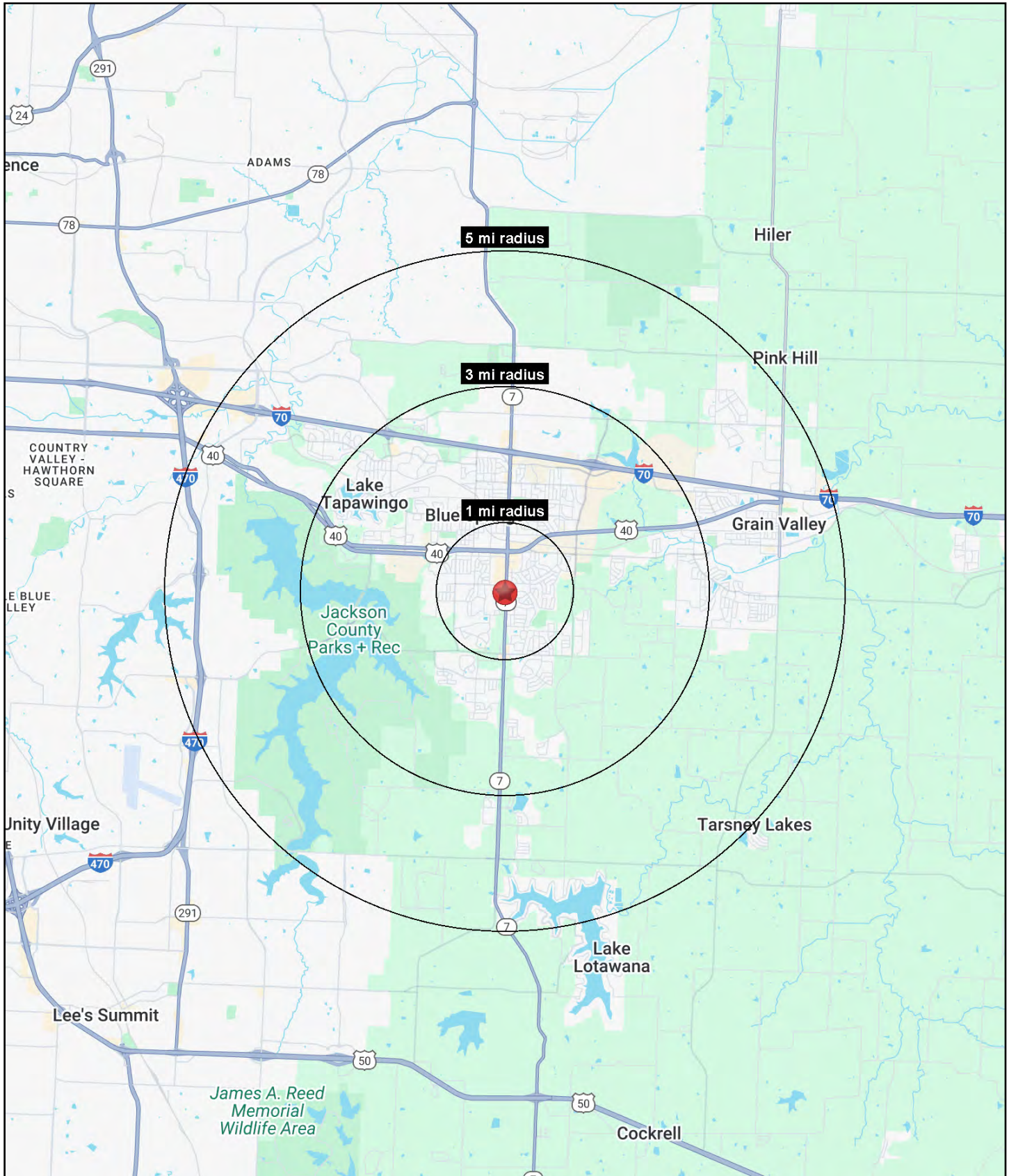
South Seven Center | Retail For Lease

1501-1715 MO-7 Highway, Blue Springs, Missouri



South Seven Center | Retail For Lease

1501-1715 MO-7 Highway, Blue Springs, Missouri





South Seven Center | Retail For Lease

1501-1715 MO-7 Highway, Blue Springs, Missouri

1501-1715 MO-7 Highway Blue Springs, MO 64015	1 mi radius	3 mi radius	5 mi radius
Population			
2025 Estimated Population	12,407	49,813	94,745
2030 Projected Population	12,725	51,392	98,553
2020 Census Population	12,454	50,103	93,001
2010 Census Population	11,600	45,191	81,009
Projected Annual Growth 2025 to 2030	0.5%	0.6%	0.8%
Historical Annual Growth 2010 to 2025	0.5%	0.7%	1.1%
2025 Median Age	35.6	36.9	38.2
Households			
2025 Estimated Households	4,731	19,187	35,758
2030 Projected Households	4,905	19,975	37,452
2020 Census Households	4,551	18,793	34,577
2010 Census Households	4,272	17,015	30,037
Projected Annual Growth 2025 to 2030	0.7%	0.8%	0.9%
Historical Annual Growth 2010 to 2025	0.7%	0.9%	1.3%
Race and Ethnicity			
2025 Estimated White	79.6%	79.7%	81.6%
2025 Estimated Black or African American	9.2%	10.2%	8.7%
2025 Estimated Asian or Pacific Islander	1.5%	1.5%	1.7%
2025 Estimated American Indian or Native Alaskan	0.5%	0.4%	0.3%
2025 Estimated Other Races	9.2%	8.3%	7.7%
2025 Estimated Hispanic	8.2%	7.4%	6.9%
Income			
2025 Estimated Average Household Income	\$93,045	\$109,240	\$122,204
2025 Estimated Median Household Income	\$72,613	\$83,250	\$95,015
2025 Estimated Per Capita Income	\$35,480	\$42,113	\$46,160
Education (Age 25+)			
2025 Estimated Elementary (Grade Level 0 to 8)	1.2%	1.1%	1.4%
2025 Estimated Some High School (Grade Level 9 to 11)	3.9%	3.8%	3.0%
2025 Estimated High School Graduate	28.6%	29.3%	27.5%
2025 Estimated Some College	28.4%	25.1%	22.7%
2025 Estimated Associates Degree Only	8.3%	8.0%	8.1%
2025 Estimated Bachelors Degree Only	17.5%	21.0%	23.9%
2025 Estimated Graduate Degree	12.1%	11.7%	13.3%
Business			
2025 Estimated Total Businesses	515	1,820	3,052
2025 Estimated Total Employees	3,939	13,686	24,197
2025 Estimated Employee Population per Business	7.6	7.5	7.9
2025 Estimated Residential Population per Business	24.1	27.4	31.0

©2025, Sites USA, Chandler, Arizona, 480-491-1112 Demographic Source: Applied Geographic Solutions 5/2025, TIGER Geography - RS1